



Nevada Assembly District 19

This Assembly District Health Profile provides data on key health topics for the approximately 70,381 adults and children living in Nevada Assembly District 19 in 2015. Estimates are based on the data available from Office of Public Health Informatics and Epidemiology (OPHIE).

Death ¹	Assembly District	Nevada	
Heart Disease	212.9 (192.9 - 232.9)	192.8 (189.8 - 195.7)	
Cancer	199.7 (180.3 - 219.1)	164.3 (161.6 - 167.1)	↑
Chronic Lower Respiratory Diseases	68.5 (57.2 - 79.9)	52.1 (50.6 - 53.6)	↑
Accidents	35.2 (27.1 - 43.4)	39.3 (38.0 - 40.7)	
Stroke	38.7 (30.1 - 47.2)	32.2 (31.0 - 33.5)	
Alzheimers Disease	32.3 (24.5 - 40.1)	21.5 (20.5 - 22.5)	↑
Influenza and Pneumonia	25.5 (18.5 - 32.4)	20.5 (19.5 - 21.5)	
Suicide	19.1 (13.1 - 25.1)	18.7 (17.8 - 19.7)	
Diabetes Mellitus	13.7 (8.6 - 18.8)	13.3 (12.5 - 14.1)	
All Other Causes	235.4 (214.4 - 256.5)	195.7 (192.7 - 198.7)	↑

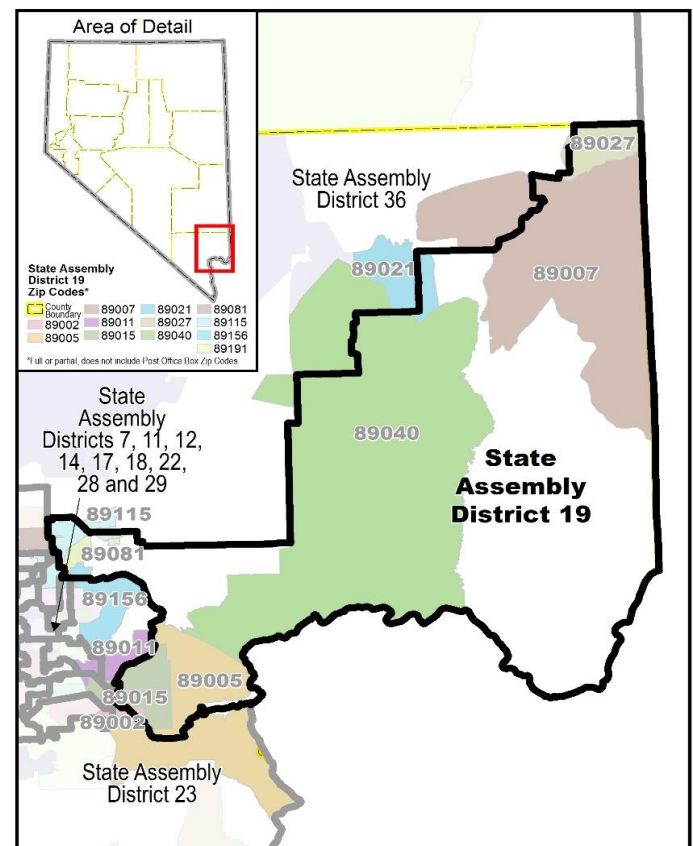
Cancer Incidence ¹⁰	Assembly District	Nevada	
All Cancers	487.2 (434.1 - 540.3)	436.5 (428.7 - 444.2)	

General Health ¹¹	Assembly District	Nevada	
Ever had a heart attack?	*	4.6% (4.2%-5.0%)	
Ever had a stroke?	*	2.9% (2.6%-3.2%)	
Currently have asthma?	9.2% (4.7%-13.6%)	7.8% (7.3%-8.4%)	
Ever had COPD?	6.7% (3.6%-9.8%)	7.0% (6.4%-7.5%)	
Ever had a depressive disorder?	19.3% (12.9%-25.8%)	16.4% (15.6%-17.2%)	
Ever had diabetes?	*	9.6% (9.0%-10.2%)	
Current smoker?	12.8% (7.8%-17.8%)	18.9% (18.0%-19.8%)	↓
Overweight or Obese?	62.7% (53.7%-71.6%)	63.2% (62.1%-64.3%)	
Mammogram in the last 2 years?	*	71.9% (69.3%-74.6%)	
Pap test in the last 3 years?	*	75.0% (72.6%-77.5%)	
PSA test in the last 2 years?	*	44.8% (41.9%-47.8%)	

HIV/STD	Assembly District	Nevada	
Persons Living with HIV/AIDS ¹²	190.4 (158.2 - 222.6)	352.7 (345.9 - 359.6)	↓
Sexually Transmitted Diseases ¹³	298.4 (258.0 - 338.7)	602.9 (593.9 - 611.9)	↓

Demographics ²	Assembly District	Nevada	
White - Non Hispanic	62.4%	52.7%	
Black - Non Hispanic	8.1%	8.0%	
Hispanic or Latino	22.1%	27.2%	
Asian - Non Hispanic	3.9%	8.0%	
All Other	3.4%	4.1%	
Income Below PL ³	16.5%	15.6%	
No Health Insurance Coverage ⁴	16.4%	15.6%	

Birth Related ⁵	Assembly District	Nevada	
Less than adequate prenatal care ⁶	24.6% (23.2% - 25.9%)	26.9% (26.7% - 27.2%)	↓
Low-birthweight births ⁷	7.3% (6.5% - 8.1%)	8.2% (8.1% - 8.3%)	
Infant Mortality (per 1,000 births) ⁸	4.9 (2.8 - 7.1)	5.3 (4.9 - 5.6)	
Teen Birth Rate (per 1,000 teens) ⁹	23.5 (16.6 - 30.3)	26.2 (25.1 - 27.2)	





Notes

District 2015 populations are based on the number individuals within each district in 2014 (obtained from U.S. Census Bureau, 2010-2014 5-Year American Community Survey, Table DP05 – ACS Demographic and Housing Estimates) as a proportion of the estimated 2015 Nevada population from the Nevada State Demographer.

¹Data reflects the causes of deaths that occurred between 2013 and 2015. Only Nevada residents are included in the data.

²Racial/Ethnic populations for each District were obtained from U.S. Census Bureau, 2010-2014 5-Year American Community Survey, Table DP05 – ACS Demographic and Housing Estimates.

³Income below poverty level (PL) was obtained from U.S. Census Bureau, 2010-2014 5-Year American Community Survey, Table DP03 – Selected Economic Characteristics

⁴Uninsured reflects individuals without insurance covered. Data was obtained from U.S. Census Bureau, 2010-2014 5-Year American Community Survey, Table S2701 – Health Insurance Coverage Status.

⁵Nevada residents only are included in the data.

⁶Adequate prenatal care is determined by calculating an expected visit ratio where the number of prenatal visits is compared to the expected number of visits between when care began and the date of delivery. The expected number of visits is adjusted for the gestational age of when care began and the gestational age at delivery. Care is deemed adequate if the ratio of observed to expected visits is 80% or greater. Data reflects the births that occurred between 2011 and 2015.

⁷Low-Birthweight babies are those weighing less than 2,500 grams (about 5.5 pounds) at birth. Data are reported by mother's residence, rather than the infant's place of birth. Data reflects the births that occurred between 2011 and 2015.

⁸Infant mortality measures the number of babies who die during the first year of life per 1,000 births. Data is reported on district of residence, not place of death. Data reflects the deaths that occurred between 2011 and 2015.

⁹Teen birth rate is the number of births to teenage females between the age of 15 and 19, per 1,000 females in this age group. Data reflects the births that occurred in 2015.

¹⁰Cancer incidence is reflective of the number of reportable cancers diagnosed in 2013 that were reported to the Nevada Central Cancer Registry.

¹¹General Health indicators are collected from the Behavioral Risk Factor Surveillance System (BRFSS), which is a state-based system of health surveys that collects information on health risk behaviors, preventive health practices, and healthcare access primarily related to chronic disease and injury. Data is provided at the zip code level, and since a zip code may be a part of multiple Districts, populations outside of a District may be included within each indicator. All indicators reflect responses from 2011-2015, except mammogram, Pap test, and PSA test which reflect responses from 2012 and 2014 only. The following questions correspond with the indicators:

- Ever had a heart attack?
 - o (Ever told) you that you had a heart attack also called a myocardial infarction?
- Ever had a stroke?
 - o (Ever told) you had a stroke?
- Currently have asthma?
 - o (Ever told) you had asthma?
 - o Do you still have asthma?
- Ever had COPD?
 - o (Ever told) you have Chronic Obstructive Pulmonary Disease or COPD, emphysema or chronic bronchitis?
- Ever had a depressive disorder?
 - o (Ever told) you have a depressive disorder, including depression, major depression, dysthymia, or minor depression?
- Ever had diabetes?
 - o (Ever told) you have diabetes?
- Current smoker?
 - o Have you smoked at least 100 cigarettes in your entire life?
 - o Do you now smoke cigarettes every day, some days, or not at all?
- Overweight or Obese?
 - o About how much do you weigh without shoes?
 - o About how tall are you without shoes?
- Mammogram in the last 2 years? (Reflective of women 50 years and over)
 - o A mammogram is an x-ray of each breast to look for breast cancer. Have you ever had a mammogram?
 - o How long has it been since you had your last mammogram?
- Pap test in the last 3 years? (Reflective of women 21 years and over)
 - o A Pap test is a test for cancer of the cervix. Have you ever had a Pap test?
 - o How long has it been since you had your last Pap test?
- PSA test in the last 2 years? (Reflective of men 40 years and over)
 - o Have you EVER HAD a PSA test?
 - o How long has it been since you had your last PSA test?

*Indicators with too few responses were suppressed due to reliability.

¹²Persons Living with HIV indicate any person regardless of HIV staging, including HIV stage 3 (AIDS), living in Nevada at the end of 2015.

¹³Sexually transmitted diseases includes all individuals reported to have chlamydia, gonorrhea, primary and secondary syphilis, and early latent syphilis in MMWR Year 2015.

The ZIP Code and legislative district data are not one-to-one comparable due to issues of geographic and data distinctiveness. ZIP codes are designated by the U.S. Postal Service for mail delivery and may not be fixed areas. The data and ZIP code boundaries presented in this report should be used for general reference only.

↑ ↓ Arrows reflect if District rates or proportions are statistically significantly higher or lower than Nevada rates or proportions for the same indicator.